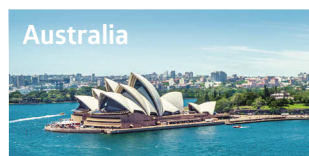


A Snapshot of CLP in 2025

About the CLP Group

The CLP Group is one of the largest investor-owned power businesses in Asia Pacific with diversified investments across Hong Kong, the Chinese Mainland, Australia, India, Taiwan Region and Southeast Asia. Our operations span every major segment of the electricity value chain – from power generation, transmission and distribution to retail and smart energy services. We are harnessing new opportunities and expanding our reach to meet the evolving needs of energy users in an increasingly decarbonised and digital world.



Operations and Technologies

- Wind
- Solar
- Hydro
- Waste-to-energy
- Nuclear
- Gas
- Coal
- Energy Storage
- Transmission and Distribution
- Retail
- Smart Meters
- LNG Terminal
- Others (e.g. oil, energy services)

Generation and Energy Storage Capacity^{2,3}

> **23,300MW**

Non-carbon Generation^{2,3}

7,688MW 33%

Wind	2,800MW	12%
Solar	1,650MW	7%
Hydro	489MW	2%
Nuclear	2,750MW	12%

Gas	6,118MW	26%
Coal	8,140MW	35%
Others	1,421MW	6%

e.g. waste-to-energy, oil, energy storage

Transmission and Distribution Lines^{2,4}

> **17,600 km**

Smart Meters

> **3.7 million**
connected for Hong Kong and Australia customers

2.5 million
installed in India

Customer Accounts

5.2 million

2.9 million
in Hong Kong

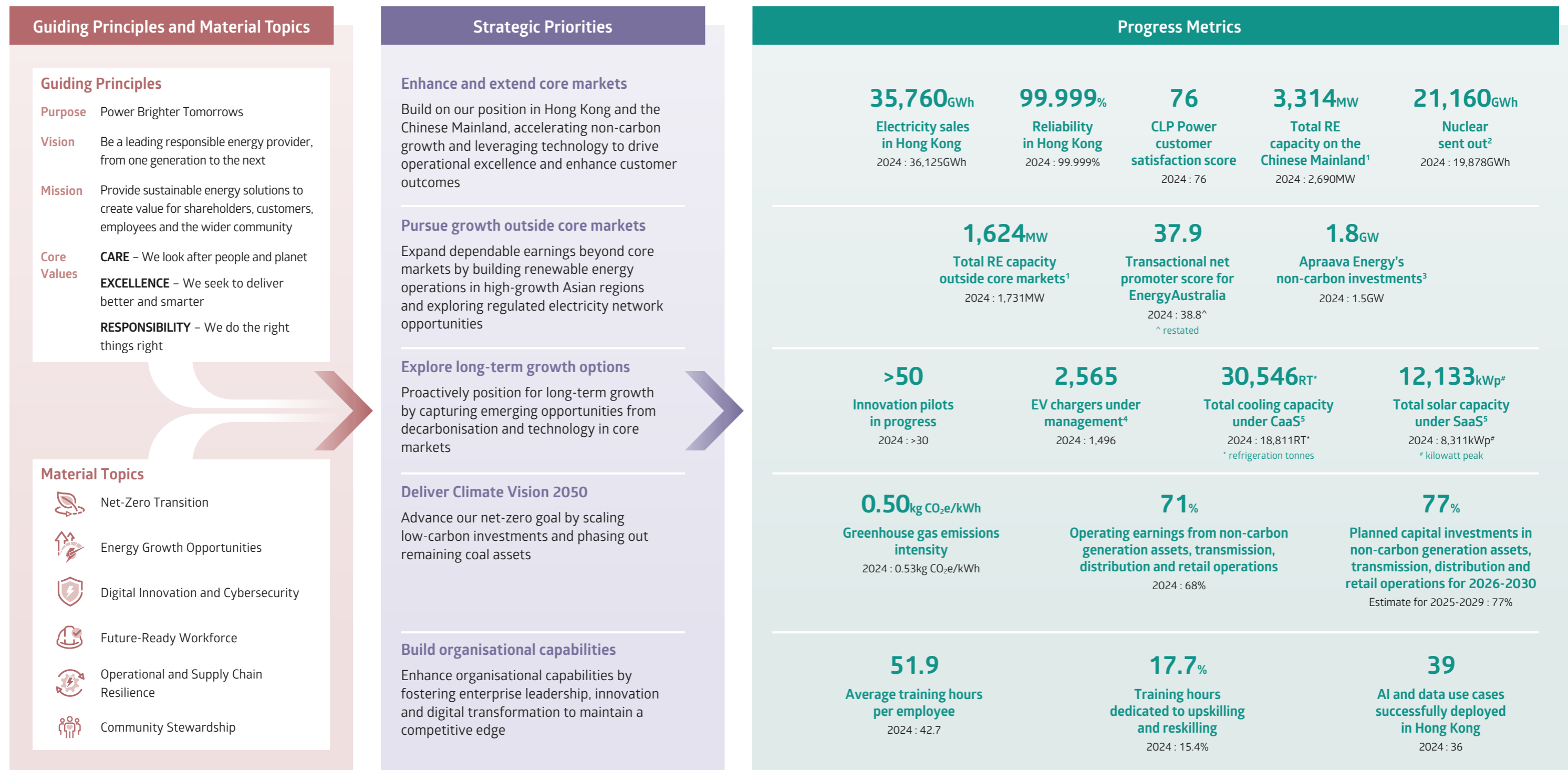
2.3 million
in Australia

Notes:

- 1 Transmission assets only.
- 2 On an equity plus long-term capacity and energy purchase basis.
- 3 In operation and under construction. Minor discrepancies may result from rounding.
- 4 In operation only.

Strategic Framework

Guided by our purpose, vision and mission, and inspired by our core values, our strategy leverages CLP's heritage to navigate the megatrends and material topics shaping the energy industry. We remain steadfast in strengthening our businesses to drive sustainable growth through investing in capabilities and opportunities that enable the energy transition for the customers and communities we serve.



Notes:

- 1 See Our Portfolio on page 262 for more information.
- 2 On an equity plus long-term capacity and energy purchase basis.
- 3 Includes gross installed capacity of solar and wind projects as well as GW-equivalent capacity of transmission projects in operation.
- 4 Includes public chargers managed by CLP Power and CLPe.
- 5 Includes capacity in operation only.

Financial Highlights

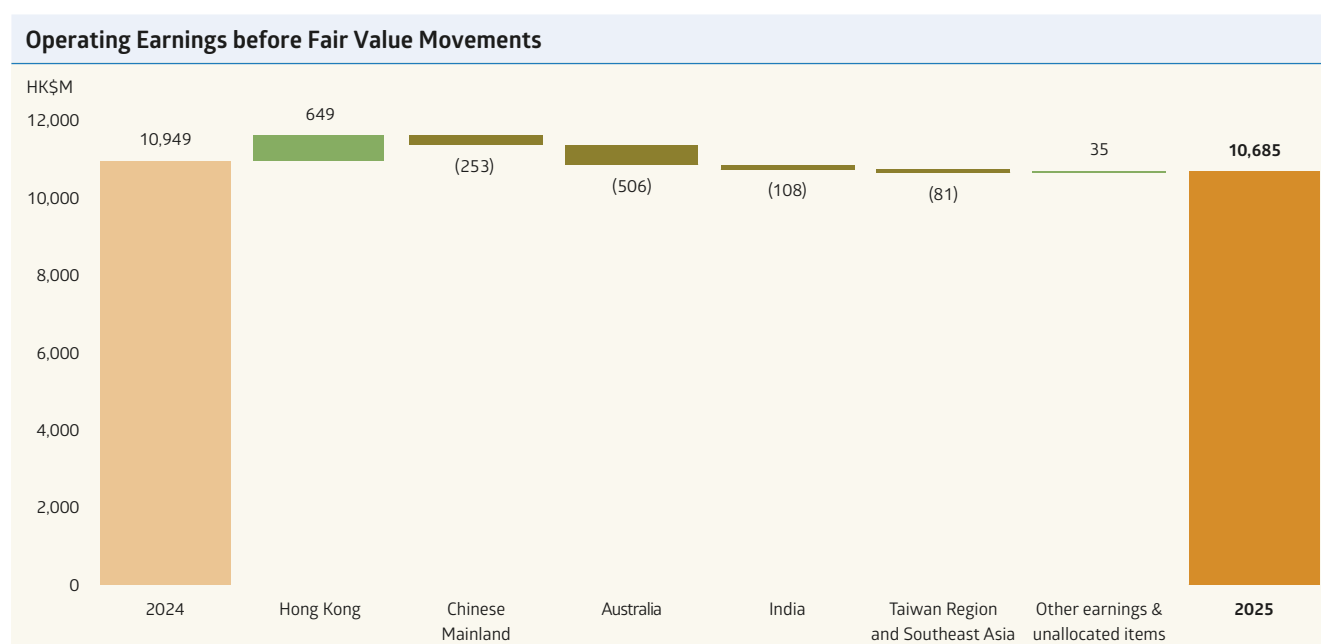
<p>Operating earnings before fair value movements</p> <p>HK\$10,685 million (2024: HK\$10,949 million)</p> <p>↓ 2.4%</p>	<p>Total earnings</p> <p>HK\$10,468 million (2024: HK\$11,742 million)</p> <p>↓ 10.8%</p>	<p>Dividend per share</p> <p>HK\$3.20 (2024: HK\$3.15)</p> <p>↑ 1.6%</p>
---	--	---

Key financial information

	2025	2024	Increase / (Decrease) %
For the year (in HK\$ million)			
Earnings			
Hong Kong energy business ¹	9,312	8,694	7.1
Hong Kong energy business related ²	232	201	
Chinese Mainland ¹	1,598	1,851	(13.7)
Australia	85	591	(85.6)
India	221	329	(32.8)
Taiwan Region and Southeast Asia	179	260	(31.2)
Other earnings in Hong Kong	(76)	(58)	
Unallocated net finance income	44	45	
Unallocated Group expenses	(910)	(964)	
Operating earnings before fair value movements	10,685	10,949	(2.4)
Fair value movements	224	699	
Operating earnings	10,909	11,648	(6.3)
Items affecting comparability	(441)	94	
Total earnings	10,468	11,742	(10.8)
Per share (in HK\$)			
Earnings per share	4.14	4.65	(10.8)
Dividend per share	3.20	3.15	1.6






Notes:

- 1 Including CLPe business in Hong Kong and on the Chinese Mainland respectively
- 2 Hong Kong energy business related includes PSDC and Hong Kong Branch Line supporting SoC business



Generating Shared Value

As a leading energy company in the Asia-Pacific region, we deliver positive impacts and create value for our stakeholders. We do this by advancing environmental sustainability, supporting our customers, empowering our people, building strong partnerships and fostering thriving communities.

 <p>Respecting Nature</p>	<ul style="list-style-type: none"> ◆ Achieved all 2025 environmental targets, demonstrating continued commitment to sustainability ◆ Refined and strengthened nature-related commitments for applicable new investment projects 	<ul style="list-style-type: none"> ◆ The certified butterfly garden at CLP Power's System Control Centre in Hong Kong helps promote local biodiversity and raise awareness of environmental protection and conservation ◆ Continued to implement CLP's Circular Economy Strategy, such as adopting an agriculture-fishery-photovoltaic integrated approach at Yixing Solar Farm on the Chinese Mainland
 <p>Customers</p>	<ul style="list-style-type: none"> ◆ CLP Power maintained world-class power supply reliability of 99.999% in Hong Kong ◆ Connected over 3.7 million smart meters for customers in Hong Kong and Australia; installed 2.5 million smart meters in India 	<ul style="list-style-type: none"> ◆ Hong Kong's first chiller system project using zero-carbon electricity at Nina Tower, delivered by CLPe, received a Merit Award at the Green Building Award 2025 ◆ More than 5,000 EV charging points were connected to CLP Power's eMobility Grid Management Platform (eGMP)
 <p>Our People</p>	<ul style="list-style-type: none"> ◆ 31.6% of leadership roles were held by women; 18.8% of women with Science, Technology, Engineering and Mathematics (STEM) qualifications ◆ Refreshed Group Inclusion and Diversity Strategy to holistically address CLP's evolving needs and be more market-aligned 	<ul style="list-style-type: none"> ◆ Over 17% of training hours dedicated to upskilling and reskilling ◆ One recordable fatality occurred during the period. The lost-time injury rates fell to a record low of 0.04. The total recordable injury rate declined to 0.16, the same as its historic low
 <p>Partners</p>	<ul style="list-style-type: none"> ◆ Pledged full support for the Hong Kong Government's Climate Action Plan 2050 ◆ Worked with the Government to ensure smooth running of the National Games¹ events held in Hong Kong, with highly reliable power supply 	<ul style="list-style-type: none"> ◆ CLP Power conducted preliminary power assessment and identified approximately 8,000 potential locations across its supply areas for installing fast chargers ◆ Made progress in the second year of the Sustainable Procurement Roadmap by embedding ESG principles into CLP's core procurement processes
 <p>Community</p>	<ul style="list-style-type: none"> ◆ Donated HK\$10.5 million to support residents affected by the Tai Po fire and the family of the deceased firefighter; applied power expertise to provide immediate and practical support ◆ Daya Bay Nuclear Power Station on the Chinese Mainland was honoured with the Legacy Award (Industrial) and Grand Award (Industrial, 1990s) by The Hong Kong Institution of Engineers 	<ul style="list-style-type: none"> ◆ CLP Power signed a Memorandum of Understanding with both the College of Professional and Continuing Education of the Hong Kong Polytechnic University and the Vocational Training Council to cultivate engineering talent ◆ CLP Power allocated HK\$240 million under the CLP Community Energy Saving Fund for a series of community support programmes

Note:

1 The 15th National Games, 12th National Games for Persons with Disabilities and 9th National Special Olympic Games.

See [2025 Sustainability Report](#) for more information