

3 April 2025

## **CLP Power Enhances Hill Fire Season Preparedness**

As the hill fire season approaches, CLP Power Hong Kong Limited (CLP Power) has implemented comprehensive measures to enhance hill fire preparedness with the objective to maintaining a safe and reliable power supply.

In the past few weeks, CLP Power has conducted site inspections at hill fire black spots and enhanced vegetation management. Pole cleaning will be carried out at over 400 locations to remove nearby weeds and tree branches, minimising their impact on power facilities should hill fires occur. CLP Power has also prepared contingency plans to mitigate the potential hazard of hill fires on the power system.

CLP Power will step up patrols at graveyards in the countryside during Ching Ming Festival. Additional staff will be dispatched to ensure a prompt response to potential hill fires near power facilities. Innovative technologies such as small unmanned aircraft and the new Grid-V system are also deployed to further enhance CLP Power's capability to handle hill fires with real-time remote monitoring.

CLP Power actively supports Fire Services Department in hill fire prevention and has provided with information to identify transmission towers and poles to facilitate quicker location of hill fires near transmission facilities, enabling faster arrival and onsite follow-up at the scene. CLP Power also responds to the Government's call by assisting in posting safety warnings near hill fire black spots, urging citizens to exercise caution and prevent hill fires.

### **About CLP Power Hong Kong Limited**

CLP Power Hong Kong Limited (CLP Power) is the Hong Kong utility subsidiary wholly owned by CLP Holdings Limited, a company listed on the Hong Kong Stock Exchange and one of the largest investor-owned power businesses in Asia. CLP Power operates a vertically integrated electricity supply business in Hong Kong, and provides a highly reliable supply of electricity and excellent customer services to more than six million people in its supply area.

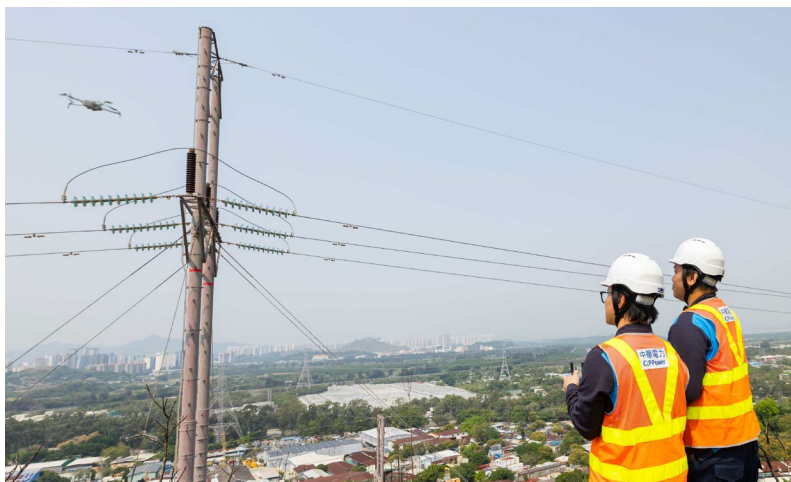
**Photo Captions:**

**Photo 1:**



CLP Power carries out pole cleaning at over 400 locations to remove nearby weeds and tree branches, minimising their impact on power facilities should hill fires occur.

**Photo 2:**



CLP Power deploys innovative technologies to enhance its capability to handle hill fires, including real-time remote monitoring by small unmanned aircraft.

**Photo 3:**



Safety warnings are displayed at CLP Power's transmission poles to remind citizens to prevent hill fires.

- Ends -