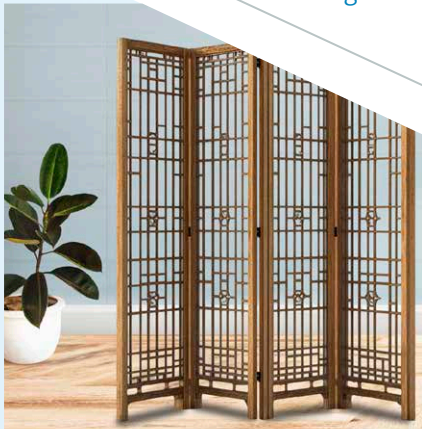


# CLP Headquarters in Kai Tak



With 125 years of history in Hong Kong, CLP has powered the city's growth with reliable electricity. In December 2024, the Group relocated its headquarters to the Kai Tak Development Area, a historic site that once housed Hong Kong's former airport and stands as a testament to the city's progress and cultural vibrancy. The new headquarters is located at the heart of Kai Tak, reflecting CLP's commitment to and confidence in Hong Kong's future.



## Architectural Features

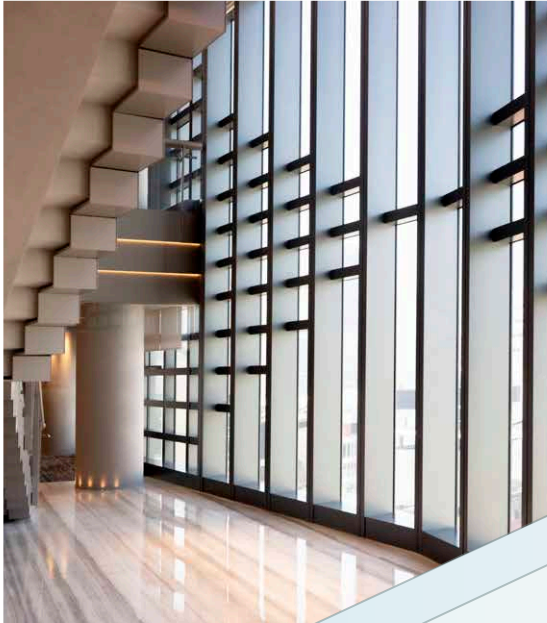
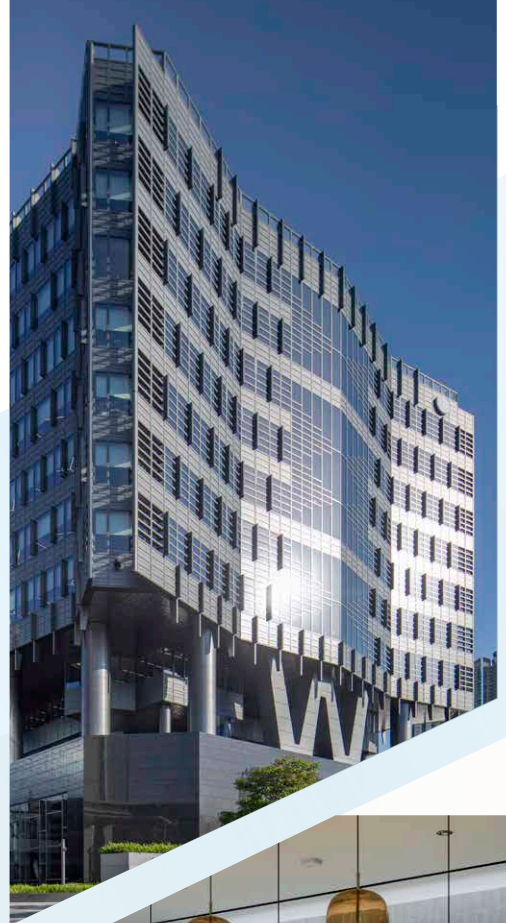
Blending the beauty of traditional Chinese folding screens with elements inspired by Hong Kong's iconic sailing junks, the new headquarters integrates cutting-edge technologies and energy-saving features, placing it among Hong Kong's most sustainable buildings.



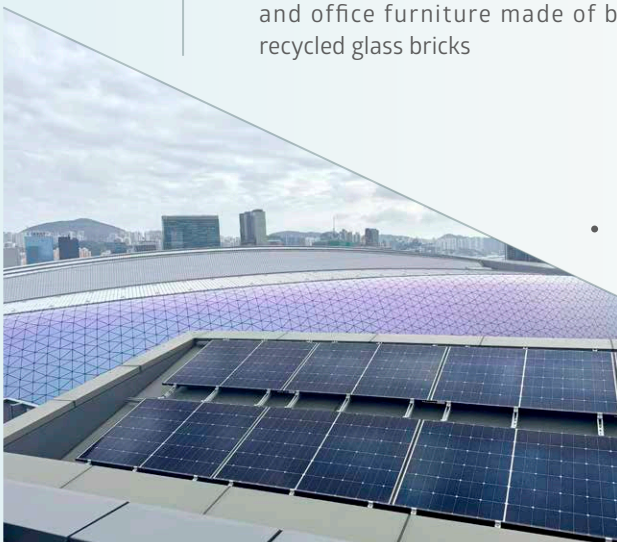


# Commitment to Sustainability

- Innovative technologies and materials including high-efficiency district cooling system, automatic ventilation and curtain controls, and high-performance glazing contribute to a 25% reduction in carbon emissions against standards set by the Electrical and Mechanical Services Department
- Highly efficient water fixtures reduce indoor water use by more than 50% compared to LEED's baseline



- Use of environmentally friendly construction materials including carbon-negative carpets and office furniture made of bamboo and recycled glass bricks



- Rooftop solar energy system supports non-carbon energy development

## Environmental Certifications

The building has received multiple environmental certifications, including:

- Provisional platinum-level certifications of Leadership in Energy Environmental Design (LEED)
- Provisional platinum-level certifications of the WELL Building Standard
- Platinum-level certifications of BEAM Plus



# Future-ready Work Environment

## Flexible Collaboration Spaces and Wellness Facilities

- A variety of workspaces and collaboration areas support diverse work styles
- Winter Garden on the top floor provides a comfortable work environment with ample natural light



- Comprehensive amenities including indoor gymnasium, work café, medical room, nursing room and meditation room
- Landscaped gardens and recreational spaces on rooftop for employees to experience gardening



## Integrating Art to Inspire Creativity

- Indoor and outdoor art installations, sculptures and feature walls on several floors display artwork created from recycled materials, enhancing workspace aesthetics

