

Asset Performance Statistics

Jiangbian Mainland China

- Hydro power station
- 330MW generation capacity and 1.1Mm³ reservoir storage capacity
- Station commissioned in 2011
- Wholly owned and operated by CLP

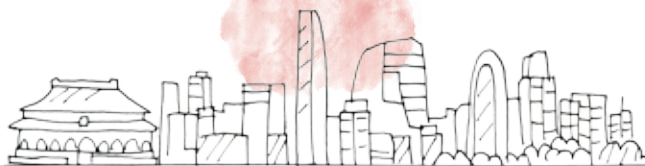


Parameter	Unit	2015	2014	2013	2012
1. Operation					
Electricity sold	GWh	1,208	1,088	1,468	1,164
Service Factor (SF) ⁽¹⁾	%	57.8	58.4	68.5	62.0
2. Water					
Water Withdrawal	Mm ³	1,675.5	1,521.0	2,066.8	1,686.7
from marine water resources ⁽²⁾	Mm ³	-	-	-	-
from freshwater resources - for hydropower generation	Mm ³	1,675.5	1,521.0	2,066.8	1,678.7
from freshwater resources - for non-generation	Mm ³	0.03	0.03	0.02	8.1
from municipal sources ⁽²⁾	Mm ³	-	-	-	-
Water Discharged	Mm ³	1,675.5	1,521.0	2,066.8	1,686.7
freshwater returned from hydropower generation	Mm ³	1,675.5	1,521.0	2,066.8	1,678.7
treated wastewater discharged to sea ⁽²⁾	Mm ³	-	-	-	-
treated wastewater discharged to freshwater bodies	Mm ³	0.03	0.03	0.02	8.1
wastewater discharged to sewerage ⁽³⁾	Mm ³	-	-	-	-
Water Reused / Recycled	Mm ³	-	-	-	-
3. Environmental Compliance					
Regulatory non-compliances resulting in fines or prosecutions	No.	0	0	0	0
Licence limit exceedances & other non-compliances	No.	0	0	0	0

Asset Performance Statistics

Jiangbian Mainland China

- Hydro power station
- 330MW generation capacity and 1.1Mm³ reservoir storage capacity
- Station commissioned in 2011
- Wholly owned and operated by CLP



Parameter	Unit	2015	2014	2013	2012
4. Waste Management ⁽⁴⁾					
Hazardous waste					
produced	T (solid) / kl (liquid)	1 / 2	1 / 1	0.1 / 2	0.2 / 1
recycled	T (solid) / kl (liquid)	0 / 0	0 / 0	0 / 2	0 / 0
disposed	T (solid) / kl (liquid)	1 / 2	1 / 1	0.1 / 0	0 / 0
Non-hazardous waste					
produced	T (solid) / kl (liquid)	33 / 0	27 / 0	29 / 0	27 / 0
recycled	T (solid) / kl (liquid)	10 / 0	3 / 0	3 / 0	0 / 0
disposed	T (solid) / kl (liquid)	23 / 0	24 / 0	26 / 0	27 / 0
5. Safety					
Employee - Fatalities	No.	0	0	0	0
Employee - Days lost / charged	Days	0	0	0	0
Employee - Lost Time Injuries ⁽⁵⁾	Cases	0	0	-	-
Employee - Occupational Disease ⁽⁵⁾	Cases	0	0	-	-
Employee - Total Work Hours ⁽⁵⁾	Manhours	123,856	139,152	-	-
Contractor - Fatalities ⁽⁵⁾	No.	0	0	-	-
Contractor - Lost Time Injuries ⁽⁵⁾	Cases	0	0	-	-
Contractor - Total Work Hours ⁽⁵⁾	Manhours	223,128	207,736	-	-

Notes:

(1) Service Factor (SF) = Total hours of operation during the period / Total length of period (hours) x 100.

(2) Not applicable to Jiangbian.

(3) Domestic wastewater only and is treated on site before discharged to freshwater bodies. There is no discharge to sewerage.

(4) Waste categorised in accordance with local regulations. Contractor waste is excluded.

(5) Started reporting in 2014.

2015 data have been independently reviewed by the Hong Kong Quality Assurance Agency (HKQAA).