

2020 Tariff Review

Presentation to LegCo Panel
on Economic Development

10 December 2019

Together Through Difficult Times

Over
\$200m

SMEs
\$150m

People
in Need
\$55m

SDU
Tenants
\$7m

Transitional
Housing
\$10m
over 3 years

*SMEs: Small and
Medium Enterprises*
SDU: Sub-divided Unit

2020 Tariff Review



Rent and Rates Special Rebate

-1.2 cents / kWh

Basic Tariff

Average Basic Tariff

+1.2 cents / kWh

± Offset

2020 Tariff Review

0%

Basic Tariff
Offset

+3¢/kWh

Fuel Cost
Adjustment



~50% of natural gas
in fuel mix

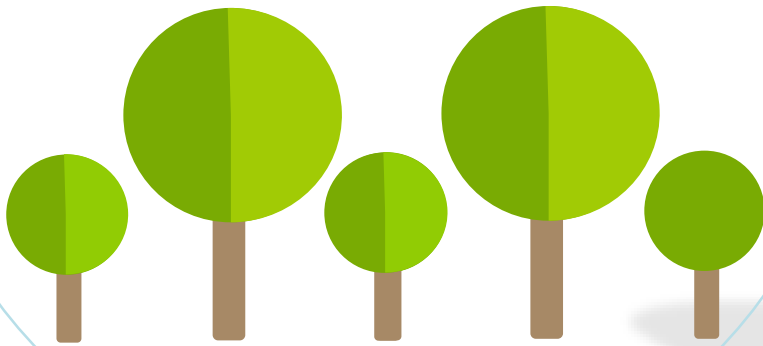
Average Net Tariff

+2.5%

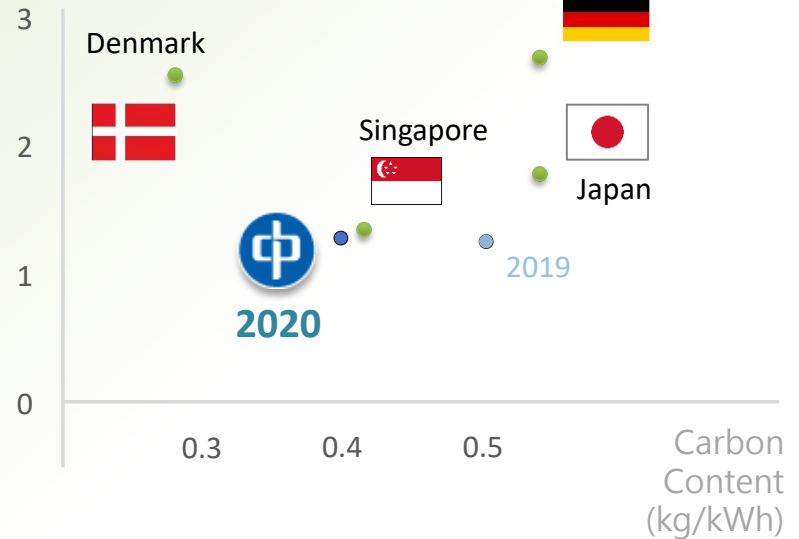
CLP offers a subsidy at HK¢ 3/unit to SME Customers (NRT tariff class) for the first 6 months in 2020 from Community Energy Saving Fund (CESF)

Significant Carbon Reduction

equivalent to
Over 50 trees
per Customer
are planted



Electricity Price
(HK\$/kWh)



20% reduction in carbon content

Carbon intensity of electricity is reduced from 0.5 kg/unit to 0.4 kg/unit

Together Through Difficult Times

6-month
subsidy
for SMEs
\$150 million



Restaurant
Coupons
\$20 million
to benefit
>100,000
households



Support
for SDU Tenants
\$7 million
to benefit
>10,000
households



CLP
Power Connect
\$25 million



Support for
VPET Students
\$10 million



Support for
Transitional
Housing
\$10 million
over 3 years



VPET: Vocational and Professional Education and Training

2020 Tariff Review

Presentation to LegCo Panel
on Economic Development

10 December 2019